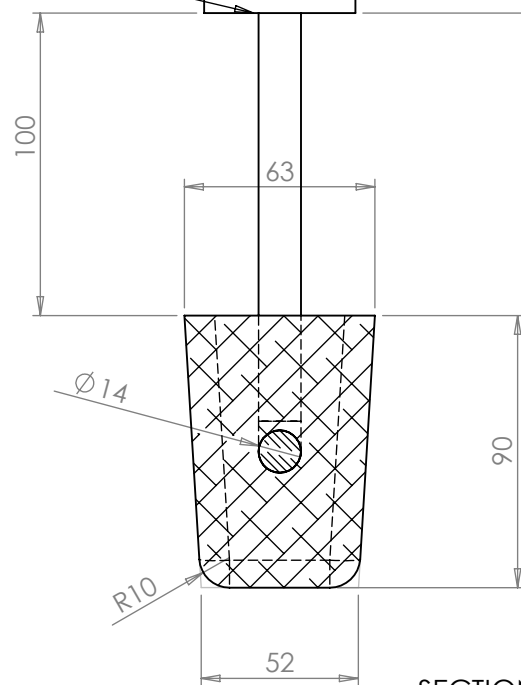


6mm fillet weld

50

∞

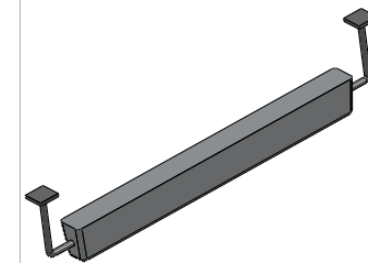
Plate 50x50x8mm



SECTION A-A  
SCALE 1 : 2.5

NOTES:

1. Net Weight: 10.00 Kg
2. Gross Weight: 11.70 Kg
3. Insert Weight: 1.70Kg
4. Insert quality:  
Plate, bar sections: EN10025  
grade S235 or S275
5. Insert Welding  
All fabrication of steel  
insert are according EN 10287  
and EN 10288
7. All dimensions are in mm



No	DATE	REVISION	REV/CHK	APPR

ANOTEC bvba  
Brusselsestraat 49  
1750 Lennik , Belgium

DRAWING NAME:

ANODE GENERAL DESCRIPTION

ANODE TYPE:

AT100-DC

**anotec**

SACRIFICIAL ANODES

DESIGNED	P. P.	BELONGS	E. P. E.
		PAGE	1/1
STUDIED		SCALE	1:3,5
APPROVED		DATE	14-03-2015
DRAWING NUMBER		CODE	